

Statement of Verification

BREG EN EPD No.: 000660

Issue 01

This is to verify that the

Environmental Product Declaration

provided by:

Amtico International

is in accordance with the requirements of:

EN 15804:2012+A2:2019

and

BRE Global Scheme Document SD207

This declaration is for:

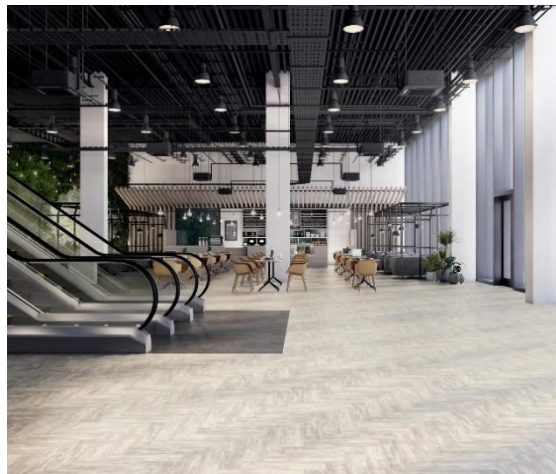
1m2 Amtico Signature 36+ (3.2 kg/m2)

**BRE Global
Verified
EPD**

Company Address

Amtico International
Kingfield Road,
Coventry
UK
CV6 5AA

amtico
A MANNINGTON COMPANY



Emma Baker

Signed for BRE Global Ltd

Emma Baker

Operator

23 January 2025

Date of this Issue

23 January 2025

Date of First Issue

22 January 2030

Expiry Date



This Statement of Verification is issued subject to terms and conditions (for details visit www.greenbooklive.com/terms.)

To check the validity of this statement of verification please, visit www.greenbooklive.com/check or contact us.

BRE Global Ltd., Garston, Watford WD25 9XX.

T: +44 (0)333 321 8811 F: +44 (0)1923 664603 E: Enquiries@breglobal.com



Environmental Product Declaration

EPD Number: 000660

General Information

EPD Programme Operator	Applicable Product Category Rules
BRE Global Watford, Herts WD25 9XX United Kingdom	BRE 2023 Product Category Rules (PN 514 Rev 3.1) for Type III environmental product declaration of construction products to EN 15804:2012+A2:2019
Commissioner of LCA study	LCA consultant/Tool
Amtico International Kingfield Road, Coventry UK CV6 5AA	John Baggageley/BRE LINA A2
Declared/Functional Unit	Applicability/Coverage
1m ² Amtico Signature 36+ (3.2 kg/m ²)	Product Specific.
EPD Type	Background database
Cradle to Gate with options	Ecoinvent v3.8
Demonstration of Verification	
CEN standard EN 15804 serves as the core PCR ^a	
Independent verification of the declaration and data according to EN ISO 14025:2010 <input type="checkbox"/> Internal <input checked="" type="checkbox"/> External	
(Where appropriate ^b) Third party verifier: Roger Connick	
a: Product category rules b: Optional for business-to-business communication; mandatory for business-to-consumer communication (see EN ISO 14025:2010, 9.4)	
Comparability	
Environmental product declarations from different programmes may not be comparable if not compliant with EN 15804:2012+A2:2019. Comparability is further dependent on the specific product category rules, system boundaries and allocations, and background data sources. See Clause 5.3 of EN 15804:2012+A2:2019 for further guidance	

Information modules covered

Product			Construction		Use stage								End-of-life				Benefits and loads beyond the system boundary
A1	A2	A3	A4	A5	Related to the building fabric				Related to the building				C1	C2	C3	C4	D
Raw materials supply	Transport	Manufacturing	Transport to site	Construction – Installation	Use	Maintenance	Repair	Replacement	Refurbishment	Operational energy use	Operational water use	Deconstruction demolition	Transport	Waste processing	Disposal		Reuse, Recovery and/or Recycling potential
<input checked="" type="checkbox"/>	<input checked="" type="checkbox"/>	<input checked="" type="checkbox"/>	<input checked="" type="checkbox"/>	<input checked="" type="checkbox"/>	<input type="checkbox"/>	<input checked="" type="checkbox"/>	<input type="checkbox"/>	<input type="checkbox"/>	<input type="checkbox"/>	<input type="checkbox"/>	<input type="checkbox"/>	<input checked="" type="checkbox"/>	<input checked="" type="checkbox"/>	<input checked="" type="checkbox"/>	<input checked="" type="checkbox"/>		<input checked="" type="checkbox"/>

Note: Ticks indicate the Information Modules declared.

Manufacturing site(s)

Amtico International
Kingfield Road
Coventry
United Kingdom
CV6 5AA

Construction Product:

Product Description

Amtico Signature 36+ is a LVT Flooring collection, consisting of a range of wood, stone and abstract designs, available in a range of finishes and sizes, including unique laying patterns.

Amtico Signature 36+ products have a total thickness of 2.5mm, with a 1mm enhance slip resistant wear layer for use in areas where slip resistance is paramount, providing a usage classification (EN 13845) of

- 34 Very Heavy Commercial
- 43 Heavy Light Industrial

The Signature 36+ Collection comes with a 20 year wear out warranty for commercial use.

Signature 36+ is manufactured from ortho-phthalate free plasticisers, contains up to 14% recycled pre-consumer content and also includes an antimicrobial additive, for enhanced hygiene and protection from bacteria and viruses such as MRSA, E.coli and SARS-CoV-2.

Technical Information

Property	Value, Unit
Usage Classification (EN ISO 10874)	34,43
Manufacturing Standard (EN 13845)	Conforms
Wear Layer Thickness (EN ISO 24340)	1.0mm
Total Thickness (EN ISO 24346)	2.5mm

Property	Value, Unit
Weight (EN ISO 23997)	3.20kg/m ²
Flammability /Smoke Emissions (EN 13501-1)	B _{fl} s1
Slip Resistance (EN 13893)	Class DS
Enhanced Slip Classification (EN 13845 Annex C)	Class ESf (Footwear)
Thermal Resistance EN 12664	0.018 m ² K/W
VOC Emissions Eurofins Indoor Air Comfort Gold	IACG-352-01-02-2020
Full TDS can be found at www.amtico.com	

Construction | Multiple Performance System

Total thickness of product: 2.5mm*

A. Quantum Guard Elite

Amtico's patented urethane formula provides superior durability and resistance against abrasions and stains. The reinforced low gloss finish is highly realistic

B. Superior 1mm wear layer

Toughened upper layer, giving excellent impact resistance and high clarity, allowing the product @designs to shine through.

C. Design layers

High resolution print layers over deeply coloured base layers create the distinctive Wood, Stone and Abstract designs that set Amtico apart.

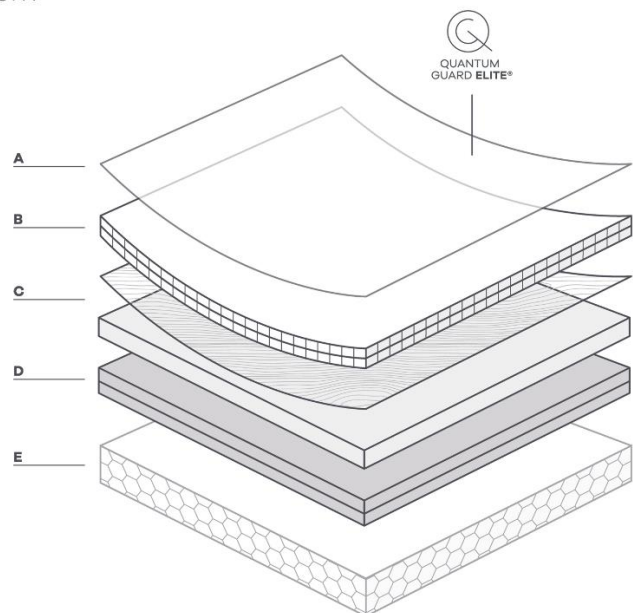
D. Backing layer

The foundation of the product which provides long lasting stability. Contains up to 30% recycled pre-consumer content.

E. Acoustic backing layer (optional)

Reduces the impact sound by up to 18dB and provides an extra level of comfort underfoot.

*3.5mm with optional Acoustic backing.



Main Product Contents

Material/Chemical Input	%
Polyurethane Lacquer	<0.5
Enhanced Slip Resistance Wear Layer	10
Polyvinyl Chloride	54
Plasticisers	15
Print Film	2
Calcium Carbonate	16
Stabiliser, Process Aids & Pigments	<2.5

Manufacturing Process

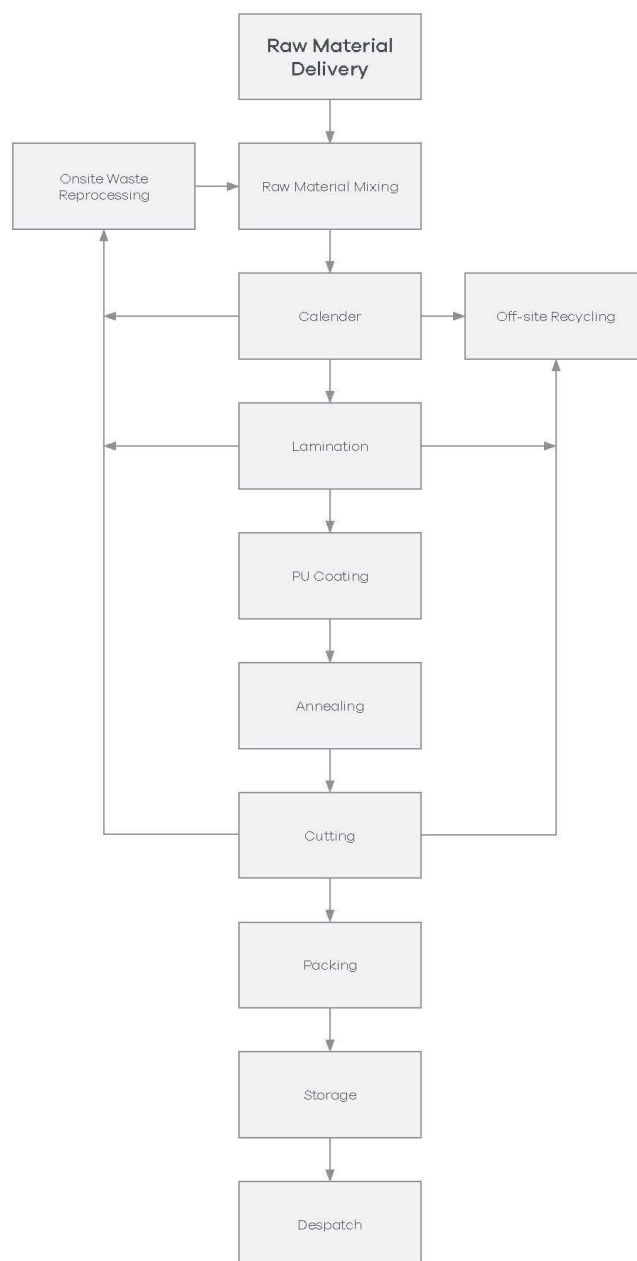
The product is constructed by the thermal lamination of the wear layer, print film and backing plies. The wear layer and backing plies are all manufactured as follows

1. Required ply raw materials are initially blended
2. The ply blend is then heated and calendered on a mill to produce a ply of the required thickness.
3. The plies required to form the end product, along with the print film, are thermally laminated together under pressure, to form the final product.
4. The product is then coated with polyurethane, before being cut to size, boxed and dispatched to the customer.
5. Cutting waste is reground on-site and reused in the production of further backing plies.

Process flow diagram

Raw Material Delivery Amtico Production Process Flow Diagram

QSF-TEC.0034



Amtico International Head Office
Kingfield Road, Coventry
CV6 5AA, UK

+44 (0) 24 7686 1400
info@amtico.com
amtico.com

amtico
flooring

Construction Installation

Amtico Signature 36+ should be bonded with a suitably low emissions adhesive to an appropriately prepared subfloor as detailed in BS 8203.

Details for Amtico Signature 36+ installation can be found at www.amtico.com

Use Information

The Amtico Signature 36+ manufacturing site is certificated to ISO 9001, ISO 14001 and ISO 45001.

Amtico Signature 36+ adheres to the emission requirements of Indoor Air Comfort Gold, German AgBB/DIBt, Belgium, and is rated as A+ in the French "Emissions dans l'air interieur" scheme.

End of Life

At the end of the product's life, the flooring is mechanically removed from the subfloor and disposed of by landfill, incineration/energy recovery or recycling. It is assumed that no energy required to remove the floor.

It is assumed that 87% of the product will go to landfill, 12% to incineration/energy recovery schemes and 1% to recycling. The distance travelled from the demolition site to a disposal site will be no more than 200km.

Life Cycle Assessment Calculation Rules

Declared / Functional unit description

1m² Amtico Signature 36+ (3.2 kg/m²)

System boundary

This is a cradle-to-gate with options LCA study that follows the modular design defined in EN15804:2012+A2:2019 and BRE 2023 Product Category Rules (PN 514 Rev 3.1) and includes the processes covered in the manufacturing site and product stage A1 to A3, A4, A5, B2, C1-C4 and D.

Data sources, quality and allocation

Specific primary data derived from Amtico's production process in the Coventry factory, have been modelled using the BRE LINA A2 software and the Ecoinvent v3.8 (2021) database. In accordance with the requirements of EN15804:2012+A2:2019, the most current available data has been used. The manufacturer-specific data from Amtico covers a period of one year (01/01/2021 – 31/12/2021). Secondary data has been obtained for all other upstream and downstream processes that are beyond the control of the manufacturer (i.e. raw material production) from the Ecoinvent v3.8 (2021) database. All Ecoinvent v3.8 (2021) datasets are complete within the context used and conform to the system boundary and the criteria for the exclusion of inputs and outputs, according to the requirements specified in EN15804:2012+A2:2019.

Amtico manufactures other LVT products at its production site, in addition to the product covered by this EPD. Calculations were performed to enable allocation of total site energy use, water and waste to the Amtico Signature 36+ product. Allocation procedures were by mass allocation and are according to EN 15804 and are based on the ISO14044 guidance. All the input and output materials such as packaging, transportation, energy, water use and wastes are included. Only exceptions are outputs to air, water or soil as these are not measured at the site.

Products manufactured in Coventry are then distributed in the UK, across Europe, Scandinavia, the Middle and Far East. The average distance transported for each geographical market was calculated by multiplying the distance travelled by the percentage sales volume by square meter. Regions where sales were less than 1% were not considered.

The electricity supply was determined by the electricity supplier's meters. The assumed electricity generation GWP was 0.312 kg CO₂ eq./kWh (Electricity, GB).

Natural gas is used for heat generation and steam production.

The assumed GWP was 0.232 kg CO₂ eq./kWh (Natural gas, at industrial furnace, GB).

Wastewater to sewer was determined by a water meter.

Module C4 end of life assumes that 1% of the PVC flooring is recycled, 12% is used in energy recovery/incineration, with the remainder going to landfill. This ratio is based on a study performed by BRE.

Quality Level	Geographical representativeness	Technical representativeness	Time representativeness
Very Good	Data from area under study.	Data from processes and products under study. Same state of technology applied as defined in goal and scope (i.e. identical technology).	There is less than 5 years between the Ecoinvent v3.8 (2021) LCI reference year, and the time period for which the LCA was undertaken.

Specific UK datasets have been selected from the Ecoinvent v3.8 (2021) LCI for this LCA. The quality level of geographical and technical representativeness is therefore Very Good. The quality level of time representativeness is Very Good as the background LCI datasets are based on Ecoinvent v3.8 (2021) which was compiled in 2021. Therefore, there is less than 5 years between the Ecoinvent v3.8 (2021) LCI reference year and the time period for which the LCA was undertaken.

Cut-off criteria

All stages of the manufacturing process have been included. Transport distances to site were not calculated for Sales Business Units with <1% of product sales. The product life was based on the commercial 20-year warranty. All inputs or outputs have been included and all raw materials, packaging and transport, energy, water use and wastes, are included, except for direct emissions to air, water and soil, which are not measured. Upstream extraction and/or processing of inputs are included within the use of the background datasets within BRE LINA A2.

LCA Results

(MND = module not declared; MNR = module not relevant; INA = indicator not assessed; AGG = aggregated)

Parameters describing environmental impacts			GWP-total	GWP-fossil	GWP-biogenic	GWP-luluc	ODP	AP	EP-freshwater
			kg CO ₂ eq	kg CO ₂ eq	kg CO ₂ eq	kg CO ₂ eq	kg CFC11 eq	mol H ⁺ eq	kg (PO ₄) ₃ ⁻ eq
Product stage	Raw material supply	A1	6.92e+0	5.70e+0	5.73e-1	6.33e-1	9.43e-6	2.73e-2	4.89e-3
	Transport	A2	1.83e-1	1.83e-1	1.18e-4	8.62e-5	4.14e-8	2.26e-3	9.89e-6
	Manufacturing	A3	1.57e+0	1.81e+0	-2.43e-1	2.67e-3	1.40e-7	4.74e-3	2.71e-4
	Total (of product stage)	A1-3	8.67e+0	7.69e+0	3.30e-1	6.36e-1	9.62e-6	3.43e-2	5.17e-3
Construction process stage	Transport	A4	1.81e+0	1.81e+0	4.16e-3	1.15e-3	3.79e-7	1.01e-2	2.71e-4
	Construction	A5	1.16e+0	7.86e-1	2.85e-1	8.64e-2	3.71e-7	4.14e-3	7.08e-4
Use stage	Use	B1	MND	MND	MND	MND	MND	MND	MND
	Maintenance	B2	1.27e+0	1.22e+0	4.76e-2	1.12e-3	1.21e-7	9.03e-3	5.25e-4
	Repair	B3	MND	MND	MND	MND	MND	MND	MND
	Replacement	B4	MND	MND	MND	MND	MND	MND	MND
	Refurbishment	B5	MND	MND	MND	MND	MND	MND	MND
	Operational energy use	B6	MND	MND	MND	MND	MND	MND	MND
	Operational water use	B7	MND	MND	MND	MND	MND	MND	MND
87% Landfill, 12% Incineration/Energy Recovery, 1% Recycled									
End of life	Deconstruction, demolition	C1	0.00e+0	0.00e+0	0.00e+0	0.00e+0	0.00e+0	0.00e+0	0.00e+0
	Transport	C2	1.07e-1	1.06e-1	9.07e-5	4.18e-5	2.46e-8	4.32e-4	6.85e-6
	Waste processing	C3	8.23e-1	8.21e-1	1.73e-3	1.20e-4	2.64e-8	6.36e-4	3.70e-5
	Disposal	C4	2.35e-1	2.35e-1	2.95e-4	3.07e-5	8.93e-9	2.56e-4	4.29e-6
Potential benefits and loads beyond the system boundaries	Reuse, recovery, recycling potential	D	-2.98e-1	-2.95e-1	-3.22e-3	-3.05e-4	-5.08e-8	-1.62e-3	-1.42e-4

GWP-total = Global warming potential, total;
 GWP-fossil = Global warming potential, fossil;
 GWP-biogenic = Global warming potential, biogenic;
 GWP-luluc = Global warming potential, land use and land use change;

ODP = Depletion potential of the stratospheric ozone layer;
 AP = Acidification potential, accumulated exceedance; and
 EP-freshwater = Eutrophication potential, fraction of nutrients reaching freshwater end compartment

LCA Results (continued)

Parameters describing environmental impacts			EP-marine	EP-terrestrial	POCP	ADP-mineral&metals	ADP-fossil	WDP	PM
			kg N eq	mol N eq	kg NMVOC eq	kg Sb eq	MJ, net calorific value	m ³ world eq deprived	disease incidence
Product stage	Raw material supply	A1	6.70e-3	4.75e-2	1.72e-2	9.09e-5	1.42e+2	5.08e+0	2.18e-7
	Transport	A2	5.87e-4	6.50e-3	1.79e-3	3.96e-7	2.70e+0	1.13e-2	1.63e-8
	Manufacturing	A3	1.45e-3	1.34e-2	3.42e-3	4.47e-6	4.07e+1	3.67e-1	3.87e-8
	Total (of product stage)	A1-3	8.74e-3	6.74e-2	2.25e-2	9.58e-5	1.85e+2	5.45e+0	2.73e-7
Construction process stage	Transport	A4	3.06e-3	3.37e-2	1.10e-2	2.76e-5	2.68e+1	1.98e-1	1.97e-7
	Construction	A5	1.30e-3	8.64e-3	2.91e-3	1.13e-5	1.83e+1	9.44e-1	4.14e-8
Use stage	Use	B1	MND	MND	MND	MND	MND	MND	MND
	Maintenance	B2	5.20e-3	1.60e-2	5.22e-3	1.74e-5	3.55e+1	1.55e+0	1.05e-7
	Repair	B3	MND	MND	MND	MND	MND	MND	MND
	Replacement	B4	MND	MND	MND	MND	MND	MND	MND
	Refurbishment	B5	MND	MND	MND	MND	MND	MND	MND
	Operational energy use	B6	MND	MND	MND	MND	MND	MND	MND
	Operational water use	B7	MND	MND	MND	MND	MND	MND	MND
87% Landfill, 12% Incineration/Energy Recovery, 1% Recycled									
End of life	Deconstruction , demolition	C1	0.00e+0	0.00e+0	0.00e+0	0.00e+0	0.00e+0	0.00e+0	0.00e+0
	Transport	C2	1.30e-4	1.42e-3	4.35e-4	3.70e-7	1.61e+0	7.24e-3	9.18e-9
	Waste processing	C3	1.88e-4	1.70e-3	4.79e-4	9.28e-7	1.37e+0	1.53e+0	5.49e-9
	Disposal	C4	1.10e-3	9.37e-4	3.19e-4	9.77e-8	6.95e-1	3.11e-2	5.06e-9
Potential benefits and loads beyond the system boundaries	Reuse, recovery, recycling potential	D	-2.55e-4	-2.53e-3	-7.43e-4	-1.29e-6	-5.09e+0	-1.36e-1	-1.21e-8

EP-marine = Eutrophication potential, fraction of nutrients reaching marine end compartment;
 EP-terrestrial = Eutrophication potential, accumulated exceedance;
 POCP = Formation potential of tropospheric ozone;
 ADP-mineral & metals = Abiotic depletion potential for non-fossil resources;

ADP-fossil = Depletion potential of the stratospheric ozone layer;
 WDP = Water (user) deprivation potential, deprivation-weighted water consumption; and
 PM = Particulate matter.

LCA Results (continued)

Parameters describing environmental impacts							
			IRP	ETP-fw	HTP-c	HTP-nc	SQP
			kBq U ²³⁵ eq	CTUe	CTUh	CTUh	dimensionless
Product stage	Raw material supply	A1	7.44e-1	1.16e+2	5.64e-9	1.24e-7	4.64e+1
	Transport	A2	1.33e-2	1.99e+0	7.67e-11	1.98e-9	2.26e+0
	Manufacturing	A3	1.05e+0	1.94e+1	7.84e-10	1.18e-8	3.91e+1
	Total (of product stage)	A1-3	1.81e+0	1.37e+2	6.50e-9	1.37e-7	8.77e+1
Construction process stage	Transport	A4	1.70e-1	2.71e+1	2.99e-9	3.49e-8	1.27e+1
	Construction	A5	1.22e-1	2.04e+1	6.05e-10	1.51e-8	8.73e+0
Use stage	Use	B1	MND	MND	MND	MND	MND
	Maintenance	B2	7.26e-2	1.01e+2	3.35e-9	6.36e-8	5.56e+0
	Repair	B3	MND	MND	MND	MND	MND
	Replacement	B4	MND	MND	MND	MND	MND
	Refurbishment	B5	MND	MND	MND	MND	MND
	Operational energy use	B6	MND	MND	MND	MND	MND
	Operational water use	B7	MND	MND	MND	MND	MND
87% Landfill, 12% Incineration/Energy Recovery, 1% Recycled							
End of life	Deconstruction, demolition	C1	0.00e+0	0.00e+0	0.00e+0	0.00e+0	0.00e+0
	Transport	C2	8.27e-3	1.26e+0	4.06e-11	1.32e-9	1.10e+0
	Waste processing	C3	9.12e-3	4.52e+1	1.78e-10	1.27e-8	8.01e-1
	Disposal	C4	3.28e-3	1.07e+1	2.37e-11	2.09e-9	1.65e+0
Potential benefits and loads beyond the system boundaries	Reuse, recovery, recycling potential	D	-6.10e-2	-4.66e+0	-1.00e-10	-2.95e-9	-1.25e+0

IRP = Potential human exposure efficiency relative to U235;
ETP-fw = Potential comparative toxic unit for ecosystems;
HTP-c = Potential comparative toxic unit for humans;

HTP-nc = Potential comparative toxic unit for humans; and
SQP = Potential soil quality index.

LCA Results (continued)

Parameters describing resource use, primary energy								
			PERE	PERM	PERT	PENRE	PENRM	PENRT
			MJ	MJ	MJ	MJ	MJ	MJ
Product stage	Raw material supply	A1	8.71e+0	4.36e+0	1.31e+1	8.43e+1	5.19e+1	1.36e+2
	Transport	A2	3.06e-2	0.00e+0	3.06e-2	2.64e+0	0.00e+0	2.64e+0
	Manufacturing	A3	5.77e+0	4.88e+0	1.06e+1	3.57e+1	5.13e+0	4.09e+1
	Total (of product stage)	A1-3	1.45e+1	9.23e+0	2.38e+1	1.23e+2	5.70e+1	1.80e+2
Construction process stage	Transport	A4	7.42e-1	0.00e+0	7.42e-1	2.63e+1	0.00e+0	2.63e+1
	Construction	A5	-9.58e-1	4.20e+0	3.24e+0	7.95e+0	8.35e+0	1.63e+1
Use stage	Use	B1	MND	MND	MND	MND	MND	MND
	Maintenance	B2	1.59e+0	0.00e+0	1.59e+0	1.30e+1	2.09e+1	3.39e+1
	Repair	B3	MND	MND	MND	MND	MND	MND
	Replacement	B4	MND	MND	MND	MND	MND	MND
	Refurbishment	B5	MND	MND	MND	MND	MND	MND
	Operational energy use	B6	MND	MND	MND	MND	MND	MND
	Operational water use	B7	MND	MND	MND	MND	MND	MND
87% Landfill, 12% Incineration/Energy Recovery, 1% Recycled								
End of life	Deconstruction, demolition	C1	0.00e+0	0.00e+0	0.00e+0	0.00e+0	0.00e+0	0.00e+0
	Transport	C2	2.27e-2	0.00e+0	2.27e-2	1.58e+0	0.00e+0	1.58e+0
	Waste processing	C3	1.17e-1	0.00e+0	1.17e-1	-8.36e+0	9.62e+0	1.26e+0
	Disposal	C4	1.24e-2	0.00e+0	1.24e-2	-5.92e+1	5.99e+1	6.83e-1
Potential benefits and loads beyond the system boundaries	Reuse, recovery, recycling potential	D	-4.46e-1	0.00e+0	-4.46e-1	-2.49e+0	6.64e-1	-1.82e+0

PERE = Use of renewable primary energy excluding renewable primary energy used as raw materials;
 PERM = Use of renewable primary energy resources used as raw materials;
 PERT = Total use of renewable primary energy resources;

PENRE = Use of non-renewable primary energy excluding non-renewable primary energy resources used as raw materials;
 PENRM = Use of non-renewable primary energy resources used as raw materials;
 PENRT = Total use of non-renewable primary energy resource

LCA Results (continued)

Parameters describing resource use, secondary materials and fuels, use of water						
			SM	RSF	NRSF	FW
			kg	MJ net calorific value	MJ net calorific value	m ³
Product stage	Raw material supply	A1	3.43e-2	0.00e+0	0.00e+0	1.21e-1
	Transport	A2	0.00e+0	0.00e+0	0.00e+0	2.77e-4
	Manufacturing	A3	1.49e-1	3.69e-7	0.00e+0	9.13e-3
	Total (of product stage)	A1-3	1.84e-1	3.69e-7	0.00e+0	1.30e-1
Construction process stage	Transport	A4	0.00e+0	0.00e+0	0.00e+0	4.95e-3
	Construction	A5	5.53e-3	1.11e-8	0.00e+0	2.23e-2
Use stage	Use	B1	MND	MND	MND	MND
	Maintenance	B2	3.95e-3	0.00e+0	0.00e+0	3.66e-2
	Repair	B3	MND	MND	MND	MND
	Replacement	B4	MND	MND	MND	MND
	Refurbishment	B5	MND	MND	MND	MND
	Operational energy use	B6	MND	MND	MND	MND
	Operational water use	B7	MND	MND	MND	MND
87% Landfill, 12% Incineration/Energy Recovery, 1% Recycled						
End of life	Deconstruction, demolition	C1	0.00e+0	0.00e+0	0.00e+0	0.00e+0
	Transport	C2	0.00e+0	0.00e+0	0.00e+0	1.79e-4
	Waste processing	C3	0.00e+0	0.00e+0	0.00e+0	3.57e-2
	Disposal	C4	0.00e+0	0.00e+0	0.00e+0	7.31e-4
Potential benefits and loads beyond the system boundaries	Reuse, recovery, recycling potential	D	0.00e+0	0.00e+0	0.00e+0	-3.33e-3

SM = Use of secondary material;
RSF = Use of renewable secondary fuels;

NRSF = Use of non-renewable secondary fuels;
FW = Net use of fresh water

LCA Results (continued)

Other environmental information describing waste categories					
			HWD	NHWD	RWD
			kg	kg	kg
Product stage	Raw material supply	A1	3.89e-1	8.71e+0	2.49e-4
	Transport	A2	3.04e-3	4.46e-2	1.15e+1
	Manufacturing	A3	7.39e-2	1.18e+0	2.87e-4
	Total (of product stage)	A1-3	4.66e-1	9.94e+0	1.15e+1
Construction process stage	Transport	A4	5.71e-2	1.17e+0	1.77e+2
	Construction	A5	5.59e-2	1.27e+0	3.44e-1
Use stage	Use	B1	MND	MND	MND
	Maintenance	B2	9.13e-2	1.61e+0	2.37e-1
	Repair	B3	MND	MND	MND
	Replacement	B4	MND	MND	MND
	Refurbishment	B5	MND	MND	MND
	Operational energy use	B6	MND	MND	MND
	Operational water use	B7	MND	MND	MND
87% Landfill, 12% Incineration/Energy Recovery, 1% Recycled					
End of life	Deconstruction, demolition	C1	0.00e+0	0.00e+0	0.00e+0
	Transport	C2	1.77e-3	3.15e-2	1.09e-5
	Waste processing	C3	2.12e-1	5.23e-1	6.26e-6
	Disposal	C4	1.38e-3	2.81e+0	4.12e-6
Potential benefits and loads beyond the system boundaries	Reuse, recovery, recycling potential	D	-8.66e-2	-6.52e-1	-1.49e-5

HWD = Hazardous waste disposed;
 NHWD = Non-hazardous waste disposed;
 RWD = Radioactive waste disposed

LCA Results (continued)

Other environmental information describing output flows – at end of life								
			CRU	MFR	MER	EE	Biogenic carbon (product)	Biogenic carbon (packaging)
			kg	kg	kg	MJ per energy carrier	kg C	kg C
Product stage	Raw material supply	A1	0.00e+0	0.00e+0	0.00e+0	0.00e+0	-7.72e-2	0.00e+0
	Transport	A2	0.00e+0	0.00e+0	0.00e+0	0.00e+0	0.00e+0	0.00e+0
	Manufacturing	A3	0.00e+0	1.63e-1	2.38e-8	7.27e-4	7.99e-3	-1.28e-1
	Total (of product stage)	A1-3	0.00e+0	1.63e-1	2.38e-8	7.27e-4	-6.92e-2	-1.28e-1
Construction process stage	Transport	A4	0.00e+0	0.00e+0	0.00e+0	0.00e+0	0.00e+0	0.00e+0
	Construction	A5	0.00e+0	2.57e-1	4.94e-9	2.18e-5	1.10e-2	5.32e-2
Use stage	Use	B1	MND	MND	MND	MND	MND	MND
	Maintenance	B2	0.00e+0	5.65e-2	0.00e+0	0.00e+0	0.00e+0	0.00e+0
	Repair	B3	MND	MND	MND	MND	MND	MND
	Replacement	B4	MND	MND	MND	MND	MND	MND
	Refurbishment	B5	MND	MND	MND	MND	MND	MND
	Operational energy use	B6	MND	MND	MND	MND	MND	MND
	Operational water use	B7	MND	MND	MND	MND	MND	MND
87% Landfill, 12% Incineration/Energy Recovery, 1% Recycled								
End of life	Deconstruction, demolition	C1	0.00e+0	0.00e+0	0.00e+0	0.00e+0	0.00e+0	0.00e+0
	Transport	C2	0.00e+0	0.00e+0	0.00e+0	0.00e+0	0.00e+0	0.00e+0
	Waste processing	C3	0.00e+0	3.20e-2	3.84e-1	0.00e+0	0.00e+0	0.00e+0
	Disposal	C4	0.00e+0	0.00e+0	0.00e+0	0.00e+0	0.00e+0	0.00e+0
Potential benefits and loads beyond the system boundaries	Reuse, recovery, recycling potential	D	0.00e+0	0.00e+0	0.00e+0	0.00e+0	0.00e+0	0.00e+0

CRU = Components for reuse;
MFR = Materials for recycling

MER = Materials for energy recovery;
EE = Exported Energy

Scenarios and additional technical information

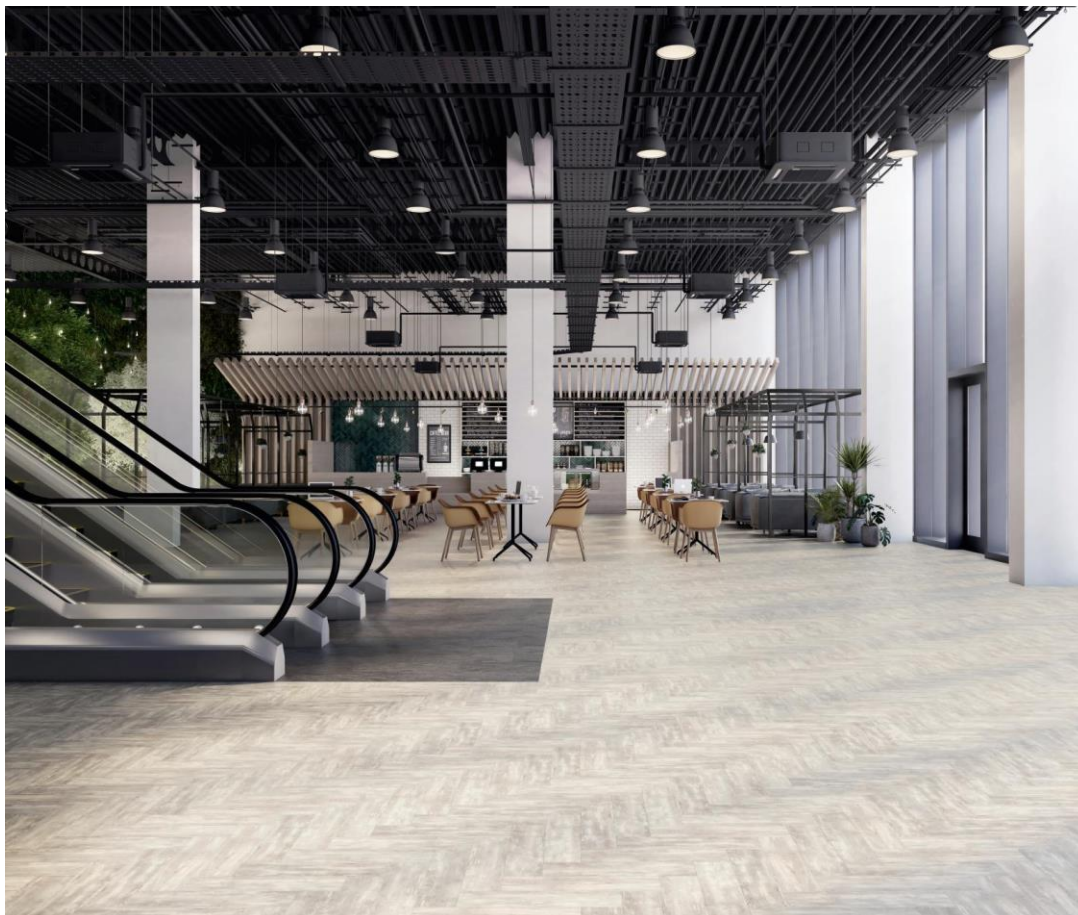
Scenarios and additional technical information			
Scenario	Parameter	Units	Results
A4 – Transport to the building site	Products manufactured at Coventry are disturbed in the UK, across Europe, Scandinavia, the Middle and Far East. The average distance transported for each geographical market was calculated by multiplying the distance travelled by the percentage sales volume by square meter. Regions where sales were less than 1% of the total sales were not considered.		
	The sales volumes were those in 2021. The transportation data is taken from Ecoinvent v3.8 (2021) datasets.		
	UK Direct Delivery:	Diesel / Van	0.32l/km
	Distance:	km	320
	Capacity utilisation (incl. empty returns)	%	61
	Bulk density of transported products	kg/m ³	1280
	Worldwide: Road	Diesel / 16-32 tonne Lorry	0.032l/km
	Distance:	km	13
	Capacity utilisation (incl. empty returns)	%	61
	Bulk density of transported products	kg/m ³	1280
	Worldwide: Sea	Marine Bunker Oil / Container Ship	0.21tonnes /km
	Distance:	km	189
	Capacity utilisation (incl. empty returns)	%	65
	Bulk density of transported productskg/m3	kg/m ³	1280
A5 – Installation in the building	Amtico Signature 36+ should be bonded with a suitable, low emissions adhesive to an appropriately prepared subfloor as detailed in BS 8203. Full details on installation can be found at www.amtico.com		
	Installation Wastage Rate	%	3
	Ancillary Materials	Mass per unit area of product installed kg/m ²	0.287
	Material Waste	Installation off cuts mass per unit area of product installed kg/m ²	0.096
	Cardboard Packaging	Mass per unit area of product installed kg/m ²	0.127
	Wood Packaging	Mass per unit area of product installed kg/m ²	0.168

Scenarios and additional technical information

Scenario	Parameter	Units	Results
	Shrink Wrap	Mass per unit area of product installed kg/m ²	0.005
B2 – Maintenance	The required recommended cleaning and maintenance regime is dependent on the place of installation and the foot traffic over the floor. High traffic areas will generally require more cleaning and maintenance than low traffic situations. Dry cleaning may be performed with a dust mop or with a vacuum cleaner. Wet cleaning can be performed with a mop, detergent and water. Power cleaning is also a possibility with scrubber driers etc. The calculations are assumed for 1m ² per year		
	52 Wet Cleans per year (Water use)	l/yr./m ²	3.224
	Detergent usage	kg/yr./m ²	0.0416
Reference service life	Amtico International (hereinafter referred to as the Company) hereby guarantees that in the event of the Amtico Signature 36+ flooring supplied to the original purchaser under this agreement, requiring replacement due to 'Wear-out' from normal foot traffic within twenty years from the date of purchase, The floor will be repaired or replaced with the same or similar material free of charge. 'Wear-out' means the removal of the pattern and colour from the Amtico Signature 36+ floor caused by the removal of the protective wear layer. Reference service life used in LCA was the commercial warranty.		
	Commercial Product Warranty.	Years	20
C1 to C4 End of life,	Data for post-consumer end of life for PVC flooring scenarios is limited. BRE BREEAM PEP scheme (2008) assumed 87% went to landfill, 12% for incineration/energy recovery and 1% was recycled. An Axion report "Post-Zero Avoidable Waste in Flooring-Towards a Circular Economy", published February 2022, also has a figure of 1%. The 87:12:1 ratio was used in this study.		
C1 Deconstruction	At the product's end of life that the product is manually mechanically removed from the sub-floor. No ancillary materials, energy or water was required for the process.	kg/m ²	3.2
C2 Transport	It has been assumed that the disposal facility will be within 200km of the demolition site.		
	Disposal from demolition site to landfill	km	174
	Disposal from demolition site to incinerator/energy recovery plant	km	24
	Disposal from demolition site to recycling plant	km	2
C3 Waste Processing	Minimal waste processing was considered necessary with no further ancillary materials, energy or water required.		
C4 Disposal	87% of the material is assumed to go to landfill	kg/m ²	2.784
	12% is incinerated /energy recovery	kg/m ²	0.384
	1% is recycled	kg/m ²	0.032
Module D	BRE BREEAM PEP scheme used a recycling figure of 1% in its calculations. (2008). An Axion report "Post-Zero Avoidable Waste in Flooring-Towards a Circular Economy", published February 2022, also has a figure of 1%.	kg/m ²	0.032
Module D	BRE BREEAM PEP scheme used a recycling figure of 1% in its calculations. (2008). An Axion report "Post-Zero Avoidable Waste in Flooring-Towards a Circular Economy", published February 2022, also has a figure of 1%.	kg/m ²	0.384

Summary, comments and additional information

Front Cover Image



About Amtico:

LVT is in our DNA.

Amtico is a British manufacturer of industry-leading flooring. A joint venture between American Biltrite and manufacturing giant Courtaulds, we began designing and making luxury vinyl tiles (LVT) in 1964. We're located in Coventry, a historic city, globally recognised for its continued contribution to British design, craft and engineering.

Today, we sell our floors in over 130 countries, but we are the only manufacturer who can proudly say we still make a large proportion of our LVT flooring from scratch, here in the UK.

A passion for brilliance

We've been setting the standard for creative expression in floor design for a long time. And we've become pretty good at it. The formula is simple. We combine relentless dedication with top-of-class expertise. Then we



add that to every single floor we make. Our people stop at nothing to ensure every one of our products delivers what's required of it – excellence.

And if you need something completely unique, our in-house design team are ready to provide advice on product choice, laying patterns and finishes. Plus, we have a team of CAD experts who will work with you to draw up your design ready for manufacture.

Where we stand on sustainability

When you choose an Amtico floor, we want you to be sure it's built on foundations that protect our planet and empower our people.

So, we are working on our strategy – a plan for tackling the major challenges, not in the next 20 years, but right now.

To read more about our strategy on sustainability, please visit <https://www.amtico.com/commercial/sustainability/>.

References

- BSI. Sustainability of construction works – Environmental product declarations – Core rules for the product category of construction products. BS EN 15804:2012+A1:2013. London, BSI, 2013.
- BSI. Environmental labels and declarations – Type III Environmental declarations – Principles and procedures. BS EN ISO 14025:2010 (exactly identical to ISO 14025:2006). London, BSI, 2010.
- BSI. Environmental management – Life cycle assessment – Principles and framework. BS EN ISO 14040:2006. London, BSI, 2006.
- BSI. Environmental management – Life cycle assessment – requirements and guidelines. BS EN ISO 14044:2006. London, BSI, 2006.
- BS 8203:2017 Installation of resilient floor coverings – Code of practice
- BS EN 13845:2017 Resilient floor coverings. Polyvinyl chloride floor coverings with particle based enhanced slip resistance. Specification
- BS EN ISO 10874:2012+A1:2020 Resilient, textile and laminate floor coverings. Classification.
- BS EN ISO 24340:2012 Resilient floor Coverings. Determination of thickness of layers
- BS EN ISO 24346:2012 Resilient floor coverings. Determination of overall thickness.
- BS EN ISO 23997:2012 Resilient floor coverings. Determination of mass per unit area.
- BS EN 13501-1:2018 Fire classification of construction products and building elements. Classification using data from reaction to fire tests.
- BS EN 13893:2002 Resilient, laminate and textile floor coverings. Measurement of dynamic coefficient of friction on dry floor surfaces.
- BS EN 12664:2001 Thermal performance of building materials and products. Determination of thermal resistance by means of guarded hot plate and heat flow meter methods. Dry and moist products of medium and low thermal resistance
- Axion Report - Zero Avoidable Waste in Flooring — Towards a Circular Economy.
- BRE's BREEAM PEP Scheme: - Report for Environmental Profiles for Amtico Signature and Spacia luxury vinyl tile products