

Amtico Projects

Heythrop Park Hotel



Project Information

Location

Chipping Norton, Oxfordshire

Sector

Hospitality & Leisure

Collections

Amtico Signature
Designers' Choice
Amtico Spacia

amtico
flooring



Featured

Regency Walnut laid in Stripwood Xtra with Passo Small in Stucco Indigo, Stucco Putty and Tempus Pause

Project

Heythrop Park Hotel

Location

Chipping Norton, Oxfordshire

Sector

Hospitality & Leisure

Collections

Amtico Signature
Designers' Choice
Amtico Spacia

Products

Dark Walnut, Graphite Slate,
Composite Calcium [Glint
Orb], Stucco Indigo, Stucco
Putty, Tempus Pause, Diffusion
Charcoal, Stucco Quartz,
Stucco Flax, Encaustic Kyanite,
Regency Walnut, Stria Basalt,
Mirabelle Crème, York Oak
and Blackened Spa Wood

Laying Patterns

Key Stone Mini EP305, Passo
Small EP399, Key Stone Small
EP216, Herringbone, Bevelled
Diamond Border, Uniform
Tile and Large Parquet



Featured
Regency Walnut laid in
Herringbone, with Stucco Putty
and Bevelled Diamond Border





Heythrop Park Hotel is a stunning Grade II* Listed property, it is set within 440 acres of parkland located in the idyllic Cotswolds. Design agency DesignLSM spearheaded the redesign of the property for Warner Leisure ahead of the hotel's grand re-opening, the brief was to retain the beautiful architecture while modernising the estate to enhance the overall guest experience.

The refurbishment included the 18th Century manor house and the contemporary extension, which is home to the hotel's hospitality spaces, including lounges, restaurants, bars, a ballroom and a state-of-the-art theatre. DesignLSM specified Amtico's durable Signature and Spacia LVT flooring collections throughout the estate, opting for laying patterns and designs that complement the hotel's historical roots.



Featured
Blackened Spa Wood

Brassey Bar and Late Lounge Bar

The Brassey Bar is named after a former owner of the estate, Thomas Brassey, who created most of the world's railways within the 19th Century. DesignLSM was inspired by his love of engineering and illustrated it throughout the venue through metal detailing and intricately patterned flooring from the Amtico Signature collection in the form of Key Stone Mini. The contrasting design zones the bar area, surrounded by Dark Walnut lid in Stripwood Xtra and divided by a strip of Diffusion Charcoal.

Also located within the extension, The Orangery takes its design cues from the 'enchanted fish pond' at the bottom of the park with its calming colour palette and bespoke submerged wallpaper. Key Stone Small in Stucco Quartz and Stucco Flax floods the space, bordered by Diffusion Charcoal and Encaustic Kyanite to complement the green hues used for the fabric and upholstery.



Featured

Key Stone Mini in Graphite Slate and Composite Calcium with Diffusion Charcoal border and Dark Walnut laid in Stripwood Xtra





amtico signature

A unique palette of colours and shapes to create inspiring flooring design.

This sophisticated collection combines original palettes, distinctive patterns and stunning details. The design-led, high-performance LVT products have a total thickness of 2.5mm and a 1mm wear layer. Signature Products also carry a 20-year warranty

167
Products

22
Signature
Laying Patterns

3
Ways to Specify



Featured
Key Stone Small in Stucco Quartz and Stucco Flax



20YR COMMERCIAL
WARRANTY



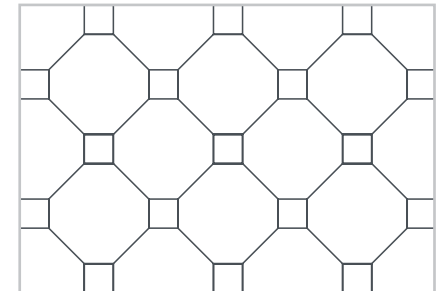
amtico signature

Laying pattern

Key Stone Mini

At a smaller scale, Key Stone Mini retains the essence of a classic ceramic floor, whilst making bolder statements through heritage colour palettes or contemporary colour combinations.

Featured in this design



Key Stone Mini



Graphite Slate
AROSSL23



Composite Calcium
AROSGN11



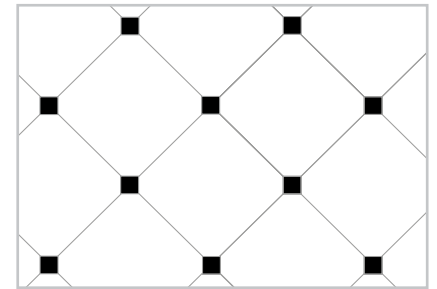
amtico signature

Laying pattern

Key Stone Small

Unashamedly influenced by Victorian style, Key Stone is an iconic pattern that delivers timeless elegance and classic geometry.

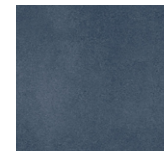
Featured in this design



Key Stone Small



Stucco Quartz
AR0AUC15



Stucco Flax
AR0AUC39

Bold statements. Big ideas. What our clients say.

“Amtico seamlessly provided the solutions to harmonise the charm of the manor house with the contemporary vision of the refurbishment. Throughout the journey, the Amtico team offered invaluable guidance and unwavering support, whether in product selection or timely delivery updates. The remarkable outcome speaks volumes—it’s a project that stands as a testament to the collective pride of all involved.”



Tom Carter
Managing Director
Carters Flooring (Leisure)

“Amtico’s flooring range provided extremely durable and cost-effective solutions for the vast project whilst also offering the flexibility to customise products. This allowed our design team the opportunity to be creative in specifying items that would complement our beautiful schemes for each room within the Grade II* Listed hotel.”

DESIGNLSM

Lisa Robertson
Lead Designer
DesignLSM

Collection Overview

Hard surface

▼ Glue Down LVT

		Wear layer	Acoustic option	Antimicrobial option	Bio option	Warranty (years)	Total products	Total sizes
amtico signature	A unique palette of colours and shapes to create inspiring flooring design.	1 mm	✓	✓	✓	20	167	13
amtico signature 36+	Safety flooring with design sophistication.	1 mm	✓	✓	✓	20	167	13
amtico décor	Unique decorative borders, corners and motifs in collaboration with the National Trust	1 mm		✓	✓	20	41	6
amtico form	Design-led flooring with natural textures.	0.7 mm	✓	✓	✓	12	36	5
amtico spacia	Simple, accessible design-led flooring solutions.	0.55 mm	✓	✓	✓	10	94	7
amtico spacia 36+	Slip-resistant tiles and planks with unrivalled design clarity.	0.55 mm	✓	✓	✓	10	90	6
amtico first	Light commercial flooring with all the benefits of Amtico.	0.3 mm				7	36	4

▼ Loose Lay LVT

		Wear layer	Acoustic option	Antimicrobial option	Bio option	Warranty (years)	Total products	Total sizes
amtico access	Loose lay flooring that's quick to install.	0.55 mm				10	24	3
amtico clicksmart	Easy-fit click flooring with a rigid core.	0.55 mm		✓		10	29	4

Specialist

▼ Glue Down

		Wear layer	Acoustic option	Antimicrobial option	Bio option	Warranty (years)	Total products	Total sizes
amtico marine	Marine standard flooring, tailored to you.	0.55 mm		✓	✓	10	32	8

Soft surface

▼ Tile

		Pile thickness	Fibre	Antimicrobial option	Bio option	Warranty (years)	Total products	Total sizes
amtico entryway	Tough, resistant entrance tiles that protect your Amtico floor.	4.2-5.4 mm	6,6 and solution dyed nylon			10	16	2

Amtico Features & Benefits

Our ethos is to combine creativity and innovation with the highest levels of quality – design, manufacturing, product and service.



All Amtico LVT products comply with Indoor Air Comfort Gold version 6.0 and are certified as low emissions products contributing to a healthy indoor environment.



All Amtico LVTs are certified as a low-emission building material by the Building Information Foundation RTS, categorised under emission class M1 for building materials.



Antimicrobial technology that is proven to reduce the presence of bacteria by more than 99% over 24 hours.*Tested with e-coli and MSA in laboratory test conditions using ISO22196 method.



Bio-attributed LVT is made with sustainable PVC that produces over 90% less CO₂ during its manufacture. Amtico bio offers the same performance and finish with a reduced carbon footprint.



Acoustic backing reduces noise by up to 19dB. This add-on option is only compatible with Signature, Form and Spacia collections. Not available in Designers' Choice – Parquet, Herringbone Plank and Random Plank are available, but only via an EP code.

Samples and support

We offer expert support worldwide with a free online global supply service for samples. Full size samples are available from your Area Sales Manager.

For full collection details visit [amtico.com](https://www.amtico.com)

**Amtico UK
& European Sales**

+44 (0) 121 745 0800
samples@amtico.com

Amtico Head Office

+44 (0) 24 7686 1400
samples@amtico.com

**Amtico International
Germany**

+49 (0) 2131 359 16 0
info@amtico.de

**Amtico International
France**

+33 (0) 1 55 88 95 70
info@amtico.fr

**Amtico International
Scandinavia**

+46 (0) 8 584 233 24
info@amtico.se

**Amtico International
Australia & New Zealand**

+61 (0) 4777 08418
australia.orders@amtico.com

**Amtico International
Asia**

+852 2327 7703
samples@amtico.com

**Amtico International
Middle East, Africa & India**

+971 (0) 50 192 33 46
samples@amtico.com

amtico.com

amtico
flooring