

Amtico Projects

The Funky Monk



Project Information

Location

Durham

Sector

Hospitality & Leisure

Collections

Amtico Signature

Amtico Décor



Featured
Toulouse Oak in Basket Weave

Project

The Funky Monk

Location

Durham

Sector

Hospitality & Leisure

Collections

Amtico Signature

Amtico Décor

Products

Stria Ash, Encaustic Tourmaline,
Toulouse Oak, Bronze, Graphite Slate,
Onyx Marble, Aspen Oak and Gold

Laying Patterns

Key Stone Small EP216,
Stripwood, French Weave, Basket
Weave, Echo DC456, Parquet,
Halcyon Pleat and Woven



Featured
Aspen Oak in Parquet



Eclectic and enticing, The Funky Monk in Durham is part of the luxury hotel group Ramside Estate. The design team at Space ID were enlisted to transform the lavish interiors for the five serviced apartments. The brief was based on a fictional monk character who lived hundreds of years ago, created by the team, and required flooring that looked traditional but with a modern twist.

Distinctive charm

Each serviced apartment is a destination in its own right and features bold patterns and timeless Woods from the Amtico Signature and Decor collections. Amtico's LVT was chosen by Space ID for the realism of the Wood and Stone designs, and ease of maintenance compared to natural versions of the materials. Fitted by Bartram Flooring, the LVT balances durability and stylish aesthetics, providing a stunning finish that can withstand everyday marks, scuffs or stains – especially important in serviced accommodation.



Featured
Toulouse Oak in Basket Weave

Luxurious style

The Cloister is a three-bedroom apartment on the top floor with views of Durham Cathedral. The lobby features the bold geometry of DC456 Echo Keys in Graphite Slate and Onyx Marble, which provides a captivating contrast to the painted dark walls and doors. The subtly distressed grain of Aspen Oak was chosen for the bedroom, dining room and lounge, laid in a combination of Parquet and Halcyon Pleat, with a feature area laid in Woven and Gold stripping.

Dynamic patterns

The contrasting designs continue in The Friar's Nook, an open-plan apartment with a terrace and Garden Room. The Victorian-style Key Stone Small was used in the lobby, with the green key complementing the furnishings and woodwork in the living areas. In order to create zones within the open-plan space, Toulouse Oak was laid in different laying patterns with Brass stripping adding an elegant finish; the lounge features Stripwood with an inset of French Weave, while Basket Weave was chosen for the Garden Room.



Featured
Aspen Oak in Woven and
Halcyon Pleat with Gold stripping





amtico signature

A unique palette of colours and shapes to create inspiring flooring design.

This sophisticated collection combines original palettes, distinctive patterns and stunning details. The design-led, high-performance LVT products have a total thickness of 2.5mm and a 1mm wear layer. Signature Products also carry a 20-year warranty.



Featured

Echo Keys in Graphite Slate and Onyx Marble
with Aspen Oak in Halcyon Pleat

167

Products

22

Signature
Laying Patterns

3

Ways to Specify



20YR COMMERCIAL
WARRANTY



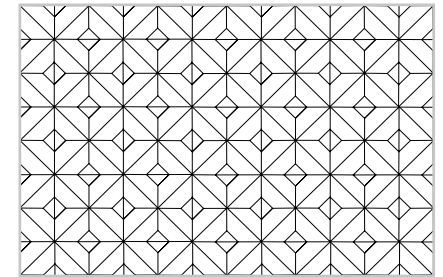
amtico décor

Laying pattern

Echo

Echoing the design of encaustic and cement tiles, this simple combination of two colours creates a contemporary look which works as a full floor or as an impactful feature area. Here, Echo Keys pairs contrast-rich charcoal and marble shards for a dramatic geometric statement.

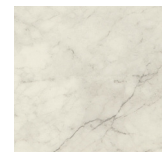
Featured in this design



Echo



Graphite Slate
AROSSL23



Onyx Marble
AROSOM30



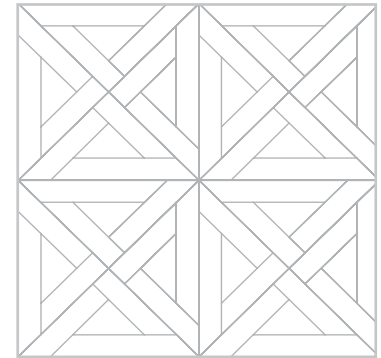
amtico signature

Laying pattern

French Weave

From a foundation of parquetry, French Weave is an adapted classic wood floor geometry for modern day use. Both elegant and robust, it is a crafted, woven pattern with the strength and balance for large spaces.

Featured in this design



French Weave



Toulouse Oak
AROW8430

Bold statements. Big ideas. What our clients say.

"We specified Amtico as they have beautiful flooring products. Time and time again they produce the right colour palettes for the ever-changing trending market, never letting their stock items go out of date or stagnant. Amtico Signature LVT is top-quality for maintenance, especially in a commercial environment, and has a brilliant guarantee. The flooring for this property needed to stand the test of time, so Amtico was the natural choice. In countless projects, Space ID has specified Amtico and we have not had any issues with the products laid."



Emma Richardson
Lead Designer, Space ID

Collection Overview

Hard surface

▼ Glue Down LVT

		Wear layer	Acoustic option	Antimicrobial option	Bio option	Warranty (years)	Total products	Total sizes
amtico signature	A unique palette of colours and shapes to create inspiring flooring design.	1 mm	✓	✓	✓	20	167	13
amtico signature 36+	Safety flooring with design sophistication.	1 mm	✓	✓	✓	20	167	13
amtico décor	Unique decorative borders, corners and motifs in collaboration with the National Trust	1 mm		✓	✓	20	41	6
amtico form	Design-led flooring with natural textures.	0.7 mm	✓	✓	✓	12	36	5
amtico spacia	Simple, accessible design-led flooring solutions.	0.55 mm	✓	✓	✓	10	94	7
amtico spacia 36+	Slip-resistant tiles and planks with unrivalled design clarity.	0.55 mm	✓	✓	✓	10	90	6
amtico first	Light commercial flooring with all the benefits of Amtico.	0.3 mm				7	36	4

▼ Loose Lay LVT

		Wear layer	Acoustic option	Antimicrobial option	Bio option	Warranty (years)	Total products	Total sizes
amtico access	Loose lay flooring that's quick to install.	0.55 mm				10	24	3
amtico clicksmart	Easy-fit click flooring with a rigid core.	0.55 mm		✓		10	29	4

Specialist

▼ Glue Down

		Wear layer	Acoustic option	Antimicrobial option	Bio option	Warranty (years)	Total products	Total sizes
amtico marine	Marine standard flooring, tailored to you.	0.55 mm		✓	✓	10	32	8

Soft surface

▼ Tile

		Pile thickness	Fibre	Antimicrobial option	Bio option	Warranty (years)	Total products	Total sizes
amtico entryway	Tough, resistant entrance tiles that protect your Amtico floor.	4.2-5.4 mm	6,6 and solution dyed nylon			10	16	2

Amtico Features & Benefits

Our ethos is to combine creativity and innovation with the highest levels of quality – design, manufacturing, product and service.



All Amtico LVT products comply with Indoor Air Comfort Gold version 6.0 and are certified as low emissions products contributing to a healthy indoor environment.



All Amtico LVTs are certified as a low-emission building material by the Building Information Foundation RTS, categorised under emission class M1 for building materials.



Antimicrobial technology that is proven to reduce the presence of bacteria by more than 99% over 24 hours.*Tested with e-coli and MSA in laboratory test conditions using ISO22196 method.



Bio-attributed LVT is made with sustainable PVC that produces over 90% less CO₂ during its manufacture. Amtico bio offers the same performance and finish with a reduced carbon footprint.



Acoustic backing reduces noise by up to 19dB. This add-on option is only compatible with Signature, Form and Spacia collections. Not available in Designers' Choice – Parquet, Herringbone Plank and Random Plank are available, but only via an EP code.

Samples and support

We offer expert support worldwide with a free online global supply service for samples. Full size samples are available from your Area Sales Manager.

For full collection details visit [amtico.com](https://www.amtico.com)

**Amtico UK
& European Sales**

+44 (0) 121 745 0800
samples@amtico.com

Amtico Head Office

+44 (0) 24 7686 1400
samples@amtico.com

**Amtico International
Germany**

+49 (0) 2131 359 16 0
info@amtico.de

**Amtico International
France**

+33 (0) 1 55 88 95 70
info@amtico.fr

**Amtico International
Scandinavia**

+46 (0) 8 584 233 24
info@amtico.se

**Amtico International
Australia & New Zealand**

+61 (0) 4777 08418
australia.orders@amtico.com

**Amtico International
Asia**

+852 2327 7703
samples@amtico.com

**Amtico International
Middle East, Africa & India**

+971 (0) 50 192 33 46
samples@amtico.com

amtico.com

amtico
flooring